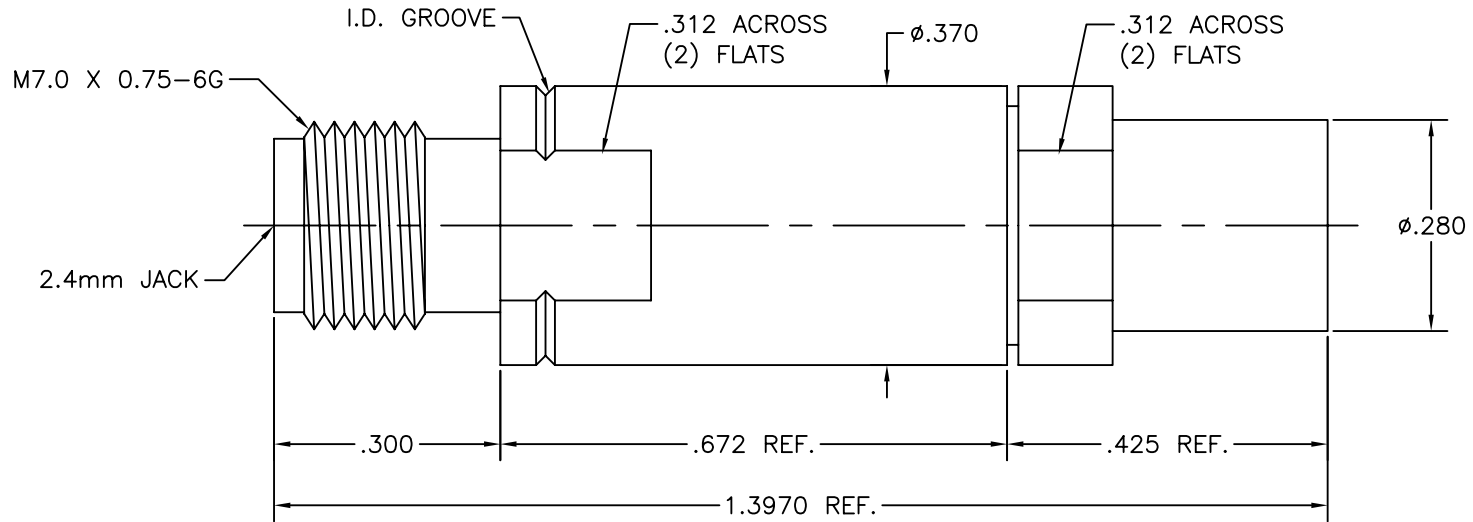


DWG NO.

200-33-20-530

NOTES:



DWG NO.

200-33-20-530

**SGMC MICROWAVE**  
www.sgmcmicrowave.com

USED ON:

**"OUTLINE DRAWING"**

REVISIONS

LTR:	DESCRIPTION: (ECN#)	DATE:
--	DWG. RELEASED	11/08/04

TITLE:

2.4mm FEMALE TO  
I.W. 1503 CABLE  
(Solder Clamp)

SCALE: NTS

CAGE CODE: 1UYM4

SIZE: A

SHEET: 1 OF 1

DRAWN: LRH ||

APPR:

UNLESS OTHERWISE SPECIFIED:  
 1. REMOVE ALL BURRS.  
 2. ALL DIMENSIONS ARE AFTER PLATING.  
 3. BREAK ALL CORNERS & EDGES .005 R. MAX.  
 4. CHAMFER 1st & LAST THREADS 45°.  
 5. DIAMETERS ON COMMON CENTERS SHALL BE CONCENTRIC WITHIN .002 T.I.R.  
 6. ALL SURFACES FINISHED TO 32√.

TOLERANCES  
 ALL DIMENSIONS  
 ARE IN INCHES  
 "DECIMALS"  
 .X ±.030  
 .XX ±.010  
 .XXX ±.005

FINISH:

MATERIAL:

"PROPRIETARY INFORMATION" THE INFORMATION WITHIN THIS DRAWING IS PROPRIETARY AND SHALL NOT BE USED OR DISCLOSED WITHOUT PRIOR WRITTEN PERMISSION FROM (SGMC) SGMC MICROWAVE.