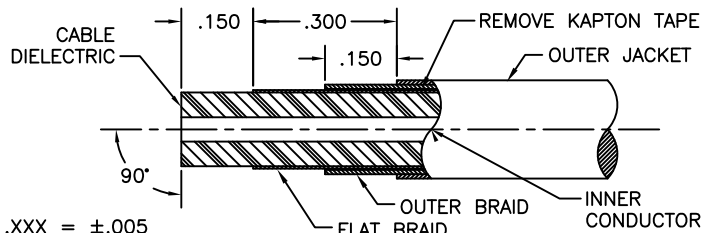
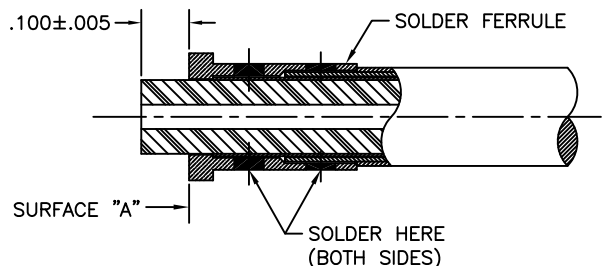


SGMC MICROWAVE CABLE ASSEMBLY INSTRUCTIONS



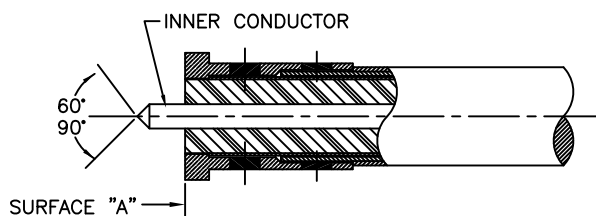
1.0 PREPARATION OF CABLE:

- 1.1 TRIM CABLE TO DIMENSIONS SHOWN. THE CABLES OUTER JACKET, INNER CONDUCTOR, & INNER BRAIDS SHOULD BE 90° FROM CENTERLINE. CARE SHOULD BE TAKEN NOT TO NICK CABLE DIELECTRIC, INNER CONDUCTOR, OR INNER BRAIDS DURING THIS OPERATION.
- 1.2 INSPECT CABLE PREPARATION TO DIMENSIONS SHOWN.



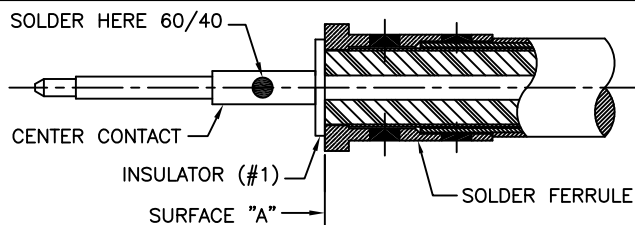
2.0 SOLDERING OF FERRULE TO CABLE OUTER CONDUCTOR:

- 2.1 SLIDE CLAMP NUT ONTO CABLE AS SHOWN BELOW IN STEP 5.0 (ENLARGED VIEW).
- 2.2 TIN INNER BRAIDS OF CABLE. HEAT SOLDER FERRULE AND SLIDE IT OVER CABLE UNTIL IT BOTTOMS COMPLETELY ON CABLE SHOULDER (OUTER CONDUCTOR).
- 2.3 USING A RESISTIVE SOLDERING IRON, SOLDER FERRULE AS SHOWN USING 60/40 SOLDER (BOTH SIDES).
- 2.4 INSPECT & REMOVE EXCESS SOLDER. CLEAN WITH SOLVENT.



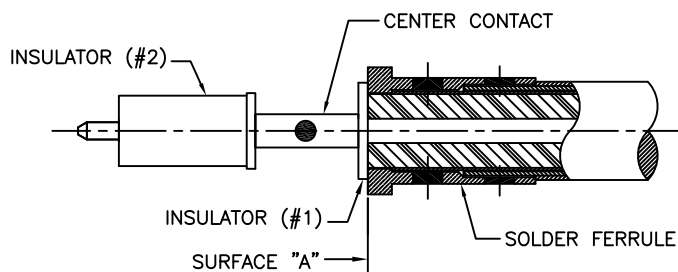
3.0 PREPARATION OF CABLE INNER CONDUCTOR:

- 3.1 TRIM DIELECTRIC FLUSH TO SURFACE "A". CARE SHOULD BE TAKEN NOT TO NICK INNER CONDUCTOR DURING THIS OPERATION.
- 3.2 FILE BLUNT END OF CABLE INNER CONDUCTOR TO A 60°/90° CONE.
- 3.3 INSPECT CABLE PREPARATION.



4.0 SOLDERING OF CONTACT TO INNER CABLE CONDUCTOR:

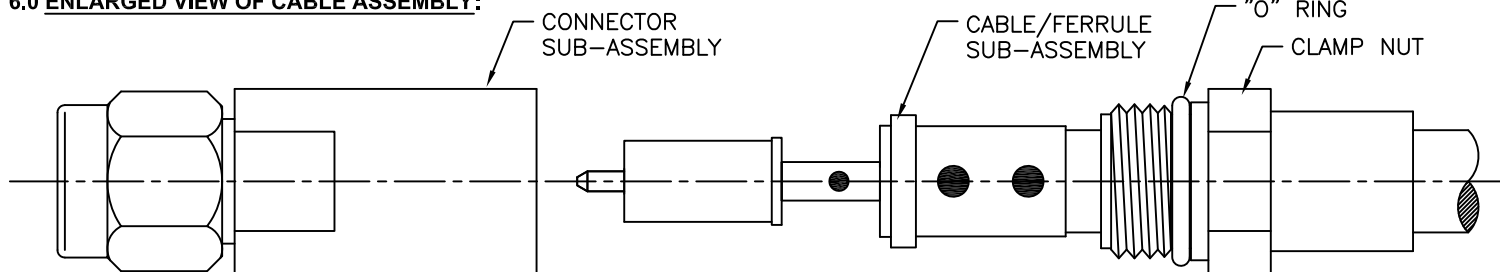
- 4.1 SLIDE INSULATOR (#1) OVER CENTER CONDUCTOR OF CABLE UNTIL IT REST FIRMLY AGAINST SURFACE "A" (FERRULE).
- 4.2 TIN INNER CONDUCTOR OF CABLE. HEAT CONTACT AND SLIDE IT OVER INNER CONDUCTOR TO REST AGAINST INSULATOR (#1).
- 4.3 USING 60/40 SOLDER, SOLDER CONTACT AS SHOWN.
- 4.4 INSPECT & REMOVE EXCESS SOLDER. CLEAN WITH SOLVENT.



5.0 INSTALLATION OF CABLE/FERRULE SUB-ASSEMBLY:

- 5.1 PLACE "O" RING ON CLAMP NUT AS SHOWN BELOW IN STEP 6.0 (ENLARGED VIEW).
- 5.2 SLIDE INSULATOR (#2) ONTO CONTACT AS SHOWN.
- 5.3 PLACE CABLE / FERRULE SUB-ASSEMBLY INTO THE BACK OF CONNECTOR SUB-ASSEMBLY BODY. CARE SHOULD BE TAKEN NOT TO BEND OR DAMAGE INNER CONDUCTOR OR INSULATOR OF CONNECTOR.
- 5.4 SLIDE CLAMP NUT OVER CABLE TO BODY & TIGHTEN CLAMP NUT TO 15 INCH-POUNDS. INSPECT INTERFACE DIMENSIONS.
- 5.5 SMA INTERFACE: CONTACT & DIELECTRIC = .000/-0.010.

6.0 ENLARGED VIEW OF CABLE ASSEMBLY:



DWG NO. **200-50-20-050**

TITLE:
**SMA MALE TO
SFT-205 CABLE
(Solder Clamp)**

SGMC MICROWAVE
www.sgmcmicrowave.com

SCALE: NTS | CAGE CODE: 1UYM4 | SIZE: A

SHEET: 1 OF 1 | DRAWN: LRH II | APPR:

REVISIONS

LTR:	DESCRIPTION: (ECN#)	DATE:
-	DWG. RELEASED	11/05/12

TOOLS REQUIRED:

1. RESISTANCE SOLDERING MACHINE.
2. FLUX, SOLDER POT, 60/40 SOLDER.
3. RAZOR BLADES.
4. SOLVENT (ISOPROPYL ALCOHOL).

"PROPRIETARY INFORMATION"