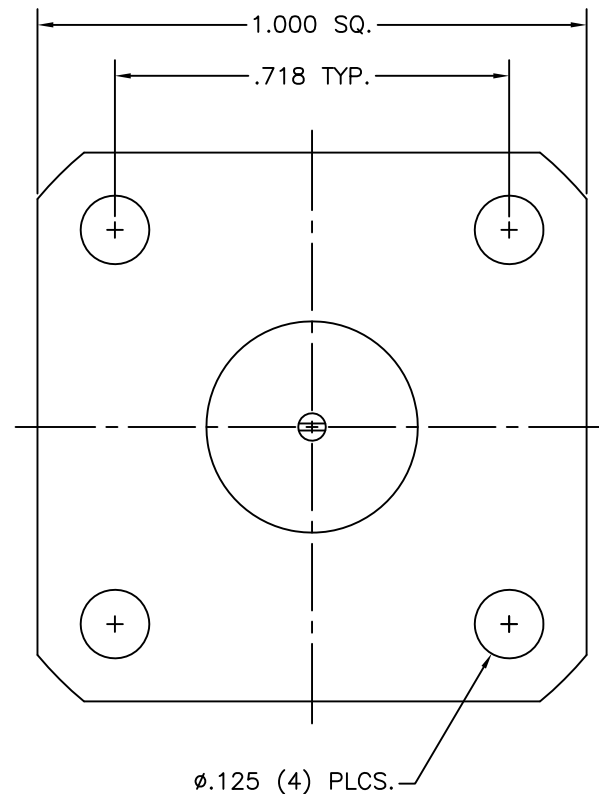
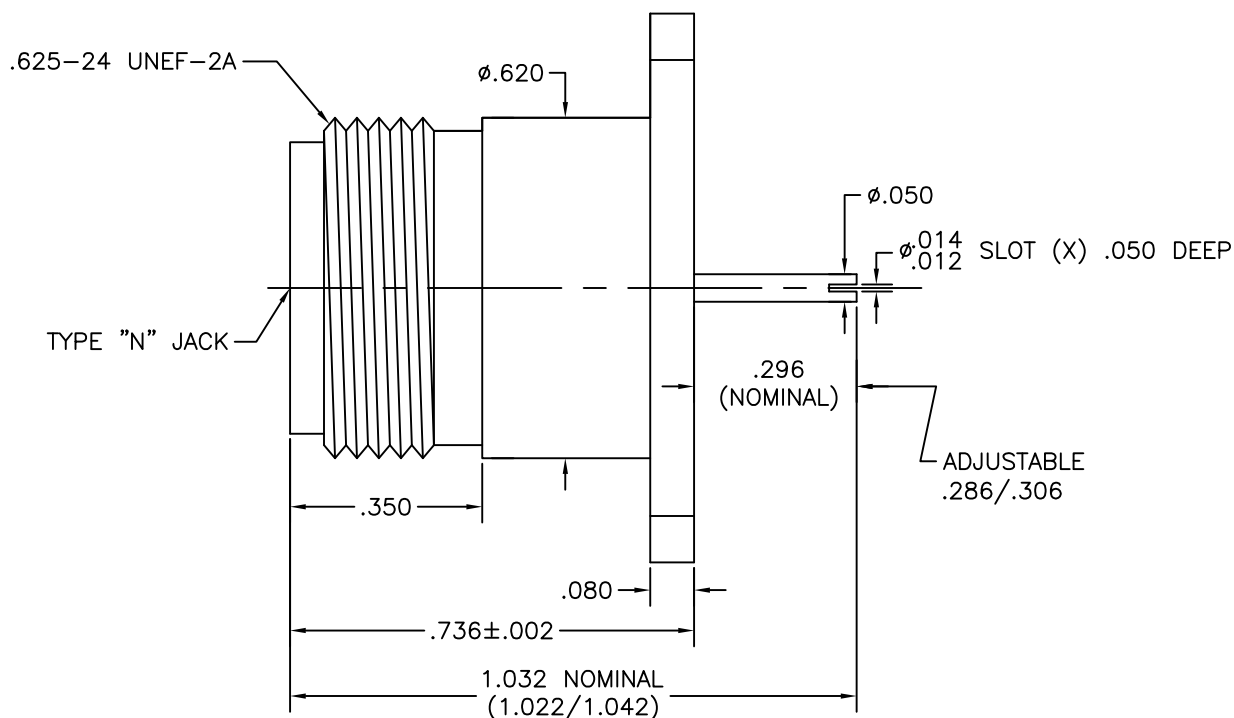


DWG NO.

311-21-50-002

- NOTES: 1. PRESS INSULATOR INTO BODY.  
 2. SHIP CONTACT LOOSE IN BAG.  
 3. USES SGMIC CONTACT # 10-21-015.

NON-CAPTIVATED



DWG NO.

311-21-50-002

**SGMC MICROWAVE**  
[www.sgmcmicrowave.com](http://www.sgmcmicrowave.com)

USED ON:

**"OUTLINE DRAWING"**

REVISIONS

LTR:	DESCRIPTION: (ECN#)	DATE:
--	DWG. RELEASED	10/24/07
--	UPDATED PIN	06/19/13

TITLE:

**"N" FEMALE  
 (4) HOLE FLANGE  
 RECEPTACLE**

SCALE: NTS    CAGE CODE: 1UYM4    SIZE: A

SHEET: 1 OF 1    DRAWN: LRH II    APPR:

- UNLESS OTHERWISE SPECIFIED:  
 1. REMOVE ALL BURRS.  
 2. ALL DIMENSIONS ARE AFTER PLATING.  
 3. BREAK ALL CORNERS & EDGES .005 R. MAX.  
 4. CHAMFER 1st & LAST THREADS 45°.  
 5. DIAMETERS ON COMMON CENTERS SHALL BE CONCENTRIC WITHIN .002 T.I.R.  
 6. ALL SURFACES FINISHED TO 32√.

TOLERANCES  
 ALL DIMENSIONS  
 ARE IN INCHES  
 "DECIMALS"  
 .X    ±.030  
 .XX   ±.010  
 .XXX ±.005

FINISH:

MATERIAL:

"PROPRIETARY INFORMATION" THE INFORMATION WITHIN THIS DRAWING IS PROPRIETARY AND SHALL NOT BE USED OR DISCLOSED WITHOUT PRIOR WRITTEN PERMISSION FROM (SGMC) SGMIC MICROWAVE.